

# XX-12800G

PROVIDES THE DATA THAT COUNTS FOR NETWORK MONITORING

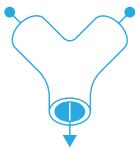
AGGREGATION, REPLICATION, ADVANCED FILTERING, LOAD BALANCING

The Profitap XX-12800G is a high-density Network Packet Broker, bringing you the power and flexibility of network traffic management with a total throughput of 12.8 Tbps in a single 19" rack unit.

With 32 QSFP-DD ports (40/100/400 Gbps), the XX-12800G allows for aggregation, replication, filtering and load balancing in very high bandwidth port monitoring and analysis scenarios.

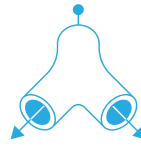


## KEY FEATURES



### AGGREGATION

Aggregate traffic coming from multiple incoming links



### REPLICATION

Replicate traffic to multiple monitoring and security tools



### FILTERING

Only send actionable data to each of the connected tools



### LOAD BALANCING

Balance traffic over multiple monitoring and security tools

## ORDER REFERENCES

PORT LICENSE	AC (2 X 1300 W, 100-240 VAC) PSU	DC (2 X 1300 W, -40--60 VDC) PSU
32 x 400GbE	XX-12800G-32-AC	XX-12800G-32-DC
16 x 400GbE	XX-12800G-16-AC	XX-12800G-16-DC



# TECHNICAL SPECIFICATIONS

## CONNECTORS

32 x QSFP-DD  
 2 x RJ45 out-of-band (10/100/1000) management  
 1 x RJ45 serial (RS232) console  
 1 x RJ45 ToD (time-of-day)  
 1 x USB 2.0

## DIMENSIONS (WxDxH)

440 x 550 x 44 mm — 17.32 x 21.65 x 1.73 in

## INCLUDED ACCESSORIES

2 x 1300 W, 80+ Platinum, 100–240 VAC, 50–60 Hz  
 or  
 2 x 1300 W, -40--60 VDC

## LEDS

1 x Health/system status  
 128 x QSFP-DD status  
 2 x MGMT link  
 2 x MGMT activity  
 2 x PSU status  
 6 x Fan status

## WEIGHT

12.8 kg — 28.2 lb

## COMPLIANCE

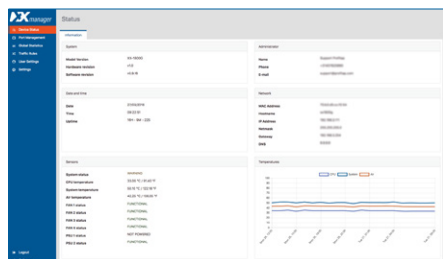
RoHS  
 CE  
 FCC

## HIGHLIGHTS

- Local and remote management (CLI, SSH, GUI, SNMP, Syslog)
- RESTful API support
- Layer 2–4 filtering
- Flexible role-based management access
- TACACS+ / RADIUS authentication
- Redundant, hot-swappable, Platinum efficiency PSUs and fan modules
- High-density, 12.8 Tbps throughput in a 1U footprint
- Supports 40G, 100G, 4 x 100G, 2 x 200G, 400G
- Supports QSFP28 and QSFP-DD transceivers

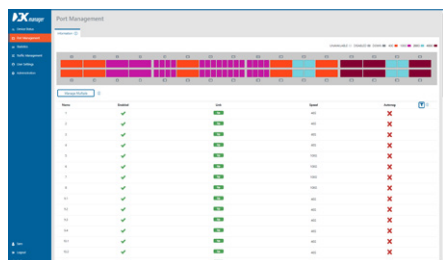


*XX-Manager is a web-based interface integrated in every XX-12800G unit, allowing easy access to the configuration and monitoring of XX-12800G settings and behavior from any OS or platform.*



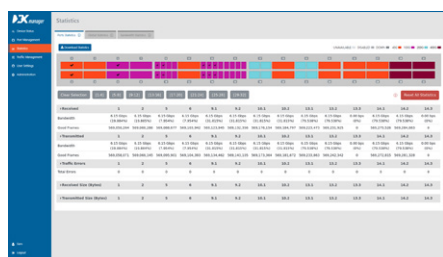
## DEVICE STATUS

Device status offers a quick overview of operational statistics related to the packet broker hardware.



## PORT MANAGEMENT

Port management offers instant overview of port status and speed. Users control the configuration of all SFP modules, where each module offers additional information in the specific status section.



## PORT STATISTICS

Port statistics displays and monitors the statistics counter for each of the device interfaces.