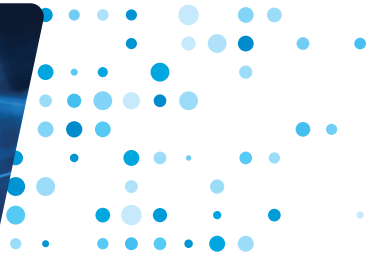


# X2-3200G



PROVIDES THE DATA THAT COUNTS FOR NETWORK MONITORING

## AGGREGATION, REPLICATION, NEXT-GEN FILTERING, LOAD BALANCING

The Profitap X2-3200G is a high-end, high-density Network Packet Broker with a total throughput of 3.2 Tbps, offering packet slicing, GTP IP filtering, GRE tunneling & de-tunneling, VXLAN de-tunneling, ERSPAN stripping, and timestamping.

Featuring 32 QSFP28 ports (40/50/100 Gbps) the X2-3200G provides aggregation, replication, powerful filtering and load balancing in very high bandwidth port monitoring and analysis scenarios. All in a single 19" rack unit.



## TECHNICAL SPECIFICATIONS

| CONNECTORS                                                                                                                    | LEDS                                                                      |
|-------------------------------------------------------------------------------------------------------------------------------|---------------------------------------------------------------------------|
| 32 x 100GbE QSFP28 ports<br>2 x 10GbE SFP+ I/O ports<br>1 x RJ45 management port<br>1 x RJ45 console port<br>1 x USB 2.0 port | 1 x System status<br>1 x Fan status<br>1 x PSU1 status<br>1 x PSU2 status |
| WEIGHT                                                                                                                        | DIMENSIONS (WxDxH)                                                        |
| 9.1 kg — 20 lbs                                                                                                               | 440 x 430 x 44 mm — 17.32 x 16.93 x 1.73 in                               |
| COMPLIANCE                                                                                                                    | LATENCY                                                                   |
| RoHS — CE — FCC                                                                                                               | < 800 ns                                                                  |
| INCLUDED ACCESSORIES                                                                                                          |                                                                           |
| 2 x 550 W, 80+ Platinum, 100-240 VAC, 50-60 Hz                                                                                |                                                                           |

## FEATURES

- Aggregation, replication, filtering, VLAN tagging and stripping, MPLS stripping and load balancing (any-to-any, any-to-many, many-to-many)
- Packet slicing, GTP IP filtering, GRE tunneling & de-tunneling, VXLAN de-tunneling, ERSPAN stripping, and timestamping
- Local and remote management (CLI, GUI, SNMP, Syslog)
- Layer 2-7 filtering
- Flexible role-based management access
- TACACS+ Authentication

## HIGHLIGHTS

- Supports 40GbE, 50GbE, 100GbE
- Up to 128 x 10/25G SFP28 ports via break-out cables
- Redundant, hot-swappable PSUs and fan modules

## ORDER REFERENCES

| Port license                    | 16 x 100GbE QSFP28 | 32 x 100GbE QSFP28 |
|---------------------------------|--------------------|--------------------|
| AC PSUs (2 x 550W, 100-240 VAC) | X2-3200G-16-AC     | X2-3200G-32-AC     |

