

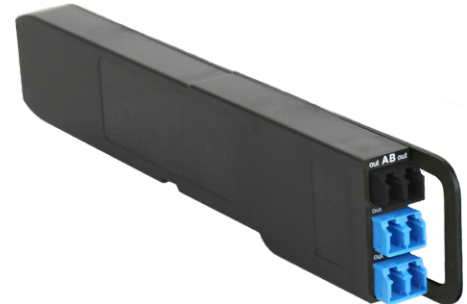
# DIODETAP

## LC TAP MODULE WITH TOTAL PROTECTION

The DiodeTAP Module provides a TAP point with an innovative security feature. It prevents any potential attacks or disruptions by blocking light coming from the monitor ports.

The DiodeTAP ensures total security and availability for monitored networks, while providing 100% visibility.

The DiodeTAP Module is part of the MOD-TAP series, and uses the Modular Chassis for rack mounting, providing up to 24 modules in 1U.



## MAXIMUM INSERTION LOSS (DB)

SPLIT RATIO*	50 / 50	60 / 40
Single-Mode 9µm	Network: 3.6 / TAP: 4.4	Network: 2.7 / TAP: 5.5

Note: These values don't include external connector loss.  
\* Other split ratios available on demand

## PRODUCT DIMENSIONS

	DIMENSIONS (WxDxH)	WEIGHT
Modular Chassis	440 x 202 x 44 mm	2140 g
	17.3 x 8 x 1.7 in	4.7 lb
DiodeTAP Module	17 x 217 x 41 mm	76 g
	0.7 x 8.5 x 1.6 in	0.17 lb

## PRODUCT SPECIFICATIONS

CHASSIS	ORDER REFERENCE		
1U Modular Chassis (up to 24 modules)	AMC-1U		
MODULE	WAVELENGTH	SPLIT RATIO	ORDER REFERENCE
LC DiodeTAP	1310nm	50/50	F1D-MOD-13-50
		60/40	F1D-MOD-13-60
SM 9/125 µm	1550nm	50/50	F1D-MOD-15-50
		60/40	F1D-MOD-15-60

## FEATURES

- Diode function protects network against light insertion from TAP ports (>35 dB insertion loss on TAP port input blocks all signal)
- Non-intrusive in-line monitoring
- Permanent network link guaranteed
- Monitoring of all OSI layers
- No packet loss, no point of failure
- Passive, unpowered
- Various split ratios available

