

XX-series



- compact
- complete
- cost effective
- for Copper or Fiber
- In-Line or Span

Failsafe 10GbE Monitoring with XX-32G

XX-32G™

A way to achieve a failsafe 10GbE multiple Monitoring

The **XX-32G** offers a smart solution, for a secure and cost efficient 10GbE Datastream Monitoring with any Analysis Tools attached.

XX-32G comes with a GUI-driven XX-Manager, controlling Aggregation, Routing and Filtering the Monitoring Traffic on demand for such appliances.

The **XX-32G** is equipped with **four (4) 1GbE and two (2) 10GbE ports**, suitable for attaching one 10GbE and up to four 1GbE Monitoring appliances

The optional swappable connectivity module adds further eight (8) further 1GbE Ports for attaching up to 8x 1GbE appliances to analyse a single 10GbE Link.



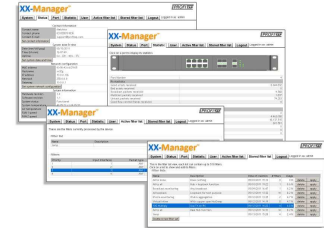
Two (2) 10GbE fixed SFP+ Ports

Four (4) fixed 1GbE SFP Ports

passive TAP section - passive **Fiber TAP** - (up to four (4)) failsafe In-Line Tapping(s) for further SFP Span Module use -

XX-Manager™

- GUI based
- Secure Access
- User & Admin Mode



Using XX-Manager, the SetUp of **XX-32G** is less than a minute to install to a 10G FiberLink and use either a 10GbE appliance and up to four 1GbE analysis devices. (see next page)



XX-series feat. Consumption/10Y:
„XX32G saves 2.000kWh in 10Y by low power consumption“

Headquarters: +33(0)310 1830
+33(0)310 1835

info-ho@profitap.com
www.profitap.com

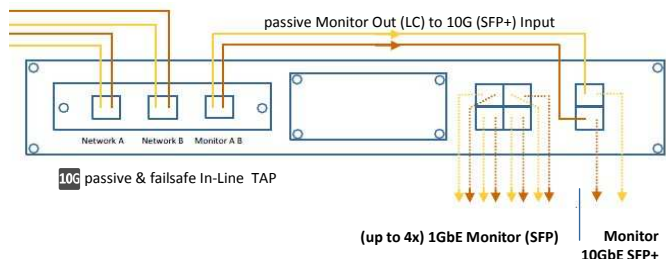
Sales office: +49 (0) 6192 922 422 6
+49 (0) 6192 922 422 7
+49 (0) 6192 922 422 8

sales@profitap.com
www.profitap.com

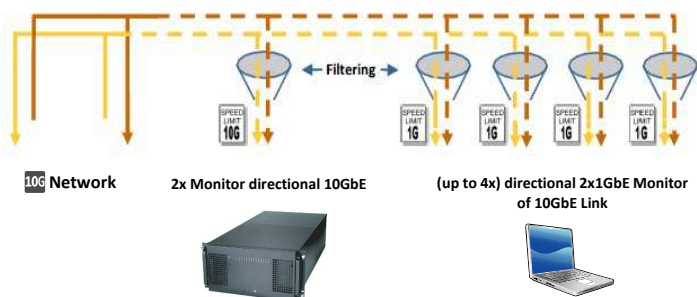
XX-series

XX-32G™ 10G TAP Application

General Application:



General Application (flow):



Order Information:

Partnumber	Description
XX-32G	System XX-32G Four (4) 1GbE SFP Ports/Slots * Two (2) 10GbE SFP+ Ports/Slots* (*SFP / SFP+ modules are not included) incl. XX-Manager Software - Filtering, Routing, many to any and any to many, includes One Year Subscription & Software Updating
XXS-4CIL	Swappable 8 Port Copper In-Line Module 4 In-Line circuits (failsafe), RJ45 Connectors
XXS-8CSP	Swappable 8 Port Copper - SPAN Module RJ45 Connectors
XXS-2CI4S	Swappable Mix Copper Modul 2x In-Line plus 4x SPAN (RJ45 Connectors)
XXS-8SFP	Swappable 8 Port SFP (SPAN) Module (SFP modules are not included)
F1RL-*. **	In-Line Fiber TAP single Port Fiber TAP, LC Conn.
F4L-*. **	Quad TAP „4 in 1“ Fiber TAP, LC Connectors (see additional datasheets)

Above items in orange = minimum required for this use



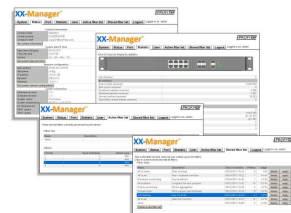
Use :

Offering a versatile connectivity for existing analysis appliances, the XX-32Gplus provides true failsafe interlinking with a 10GbE Line for being monitored via a mounted passive FiberTAP.

Any kind of 10GbE or 1GbE analysis appliance is feeded with most optimized datastreams on individual purposes

10G Monitoring :

A configuration aside many others customized profiles can be applied to achieve individual datastreams filtering best way for attached monitoring equipment:



Specifications:

Rigid 1U metal enclosure, black oven painted
International, Redundant AC powersupplies
Voltage 100-240V/50-60Hz
Low power consumption: < 40W
Optional Redundant -48Volt Telco powering
Link and activity LEDs shows state on all ports
Management Ports RJ45+ RS232 at the back
Cooling by two (2) temperature controlled, easy serviceable fan units.

Operating : 0°C to 50°C / Storage: -20 to 90°C
Humidity : 10% to 90%, none condensing

Weight & Size:

19" Main unit 44x480x260 mm (HxWxD)
Weight : 5 kgs

Approvals:

Made in EU

Headquarters: +33(0)310 1830 info-ho@profitap.com
 +33(0)310 1835 www.profitap.com

Sales office: +49 (0) 6192 922 422 6 sales@profitap.com
 +49 (0) 6192 922 422 7 www.profitap.com
 +49 (0) 6192 922 422 8